

WÖRGL

3/4" HIGH FLOW THERMOSTATIC TRIM

TM.WL.150

Description

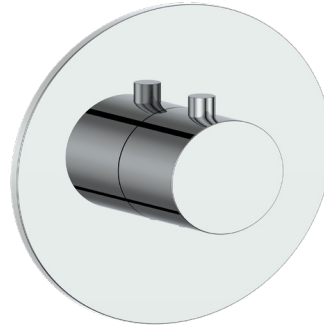
- **TM.WL.150** - Trim for 3/4" high flow thermostatic valve

Flow Rate

- 12 gpm | 45 lpm | 60 psi

Cartridge

- CE.2300.TT - cartridge



Available Finishes

- Chrome (CC)
- Brushed Nickel (BN)
- Matte Black (MB)
- Brushed Gold (BG)

(Model Pictured: Chrome)

Codes / Standards

- Uniform Plumbing Code (UPC®)
- ASME A112.18.1/CSA B125.1
- ASSE 1016

Warranty

- Limited lifetime warranty
(see full warranty for details)

