

# WÖRGL

## 2-WAY THERMOSTATIC VALVE & TRIM

VT.WL.220

### Description

- **VE.220** - 1/2" thermostatic valve with 2-way diverter
- **TM.WL.220** - Trim for 2-way thermostatic valve
- 3 positions

### Flow Rate

- 6.1 gpm | 23 lpm | 60 psi

### Cartridge

- CE.1401.TT - cartridge
- CE.1710.DR - diverter

### Available Finishes

- Chrome (CC)
- Brushed Nickel (BN)
- Matte Black (MB)

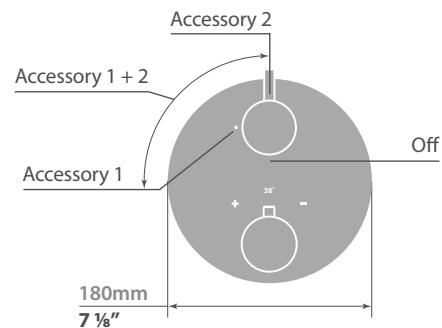
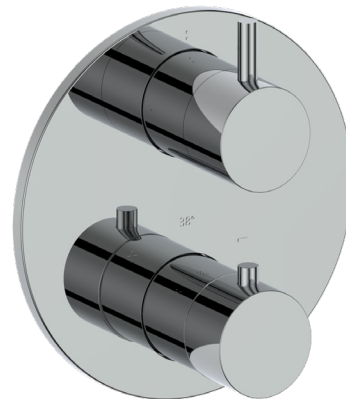
(Model Pictured: Chrome)

### Codes / Standards

- Uniform Plumbing Code (UPC®)
- ASME A112.18.1/CSA B125.1
- ASSE 1016

### Warranty

- Limited lifetime warranty  
(see full warranty for details)



### VE.220 - 2-Way Thermostatic Valve

